



SPMHA Evaluation Policies & Procedures

Last Updated June 2025

TABLE OF CONTENTS

1. OVERVIEW	3
1.1. Mission Statement	3
1.2. Evaluation Policy & Procedures	3
1.3. Evaluation Objectives	3
1.4. Evaluation Committee	3
1.5. Grievance Committee	3
1.6. Evaluation Format	4
1.7. Processes Subject to Change	4
2. PROCESS	5
2.1. Timelines	5
2.2. Transparency and Impartiality	5
2.3. SPMHA Required Apparel	5
2.4. Player Positions	6
2.5. Evaluation of Players Released from SPKAC	6
2.6. SPMHA Releases	7
2.7. Team Size and Tiering	8
2.8. Movement	8
2.9. Warm-Up Sessions	8
2.10. Initial Time Trial Group Placement	9
2.11. Time Trials	9
2.12. Drills	10
2.13. Evaluation Game Structure	11
2.14. Initial Evaluation Game Placement	12
2.15. Goaltender Evaluations	18
2.16. Injured, Sick and Absent Players	19
2.17. Suspensions	20
2.18. Team Finalization	20
2.19. Special Circumstance Placement Requests	22
2.20. Underage Tryout Process	23
3. ADMINISTRATION	26
3.1. Evaluator Selection	26
3.2. Evaluator Training	26
3.3. Evaluator Code of Conduct	26
3.4. Supporting Hardware/Software	27
3.5. Coach Selection	27
3.6. Coach Selection U11 AA/U13 Competitive (Tier 1)	27
4. COMMUNICATION	28
4.1. Member Communications	28



4.2. Parent/Spectator Code of Conduct	28
4.3. Tiering Disputes	28
4.4. Grievance Process	28
APPENDIX 1 - EVALUATION DRILL GUIDES, METRICS & WEIGHTINGS	30
U7 Drills	30
U9/U11/U13 Drills	30
Goalie Drills	30
Player Game Evaluation Metrics & Weights	31
Goalie Session & Game Evaluation Metrics & Weights	32



1. OVERVIEW

1.1. Mission Statement

Sherwood Park Minor Hockey Association (the “Association”) recognizes that the evaluation process is important to players, parents/guardians, Evaluators and the Association. All efforts are directed to ensuring that the evaluation process allows a player to demonstrate their hockey abilities and skills.

The evaluation process, as with all Association activities, is guided by the following Mission Statement of the Association: To create positive opportunities & experiences for all players through innovative leadership and exceptional service.

1.2. Evaluation Policy & Procedures

The SPMHA Evaluations Policy and Procedures are to be applied in accordance with this policy. This policy has been approved by the SPMHA Executive and may be amended, as necessary. All registration and evaluation fees (if applicable) must be paid in full, or arrangement made to pay by payments, prior to the player attending evaluations.

1.3. Evaluation Objectives

- To form balanced and competitive teams within each applicable Division category & tier where the athletes can develop and participate equitably.
- Ensure that players have a reasonable opportunity to be placed on a team appropriate to their skill level as determined during the on-ice evaluations.
- To provide a fair and impartial assessment of a player’s total hockey skills during the Time Trials and scrimmage sessions.
- While recognizing that it is impossible to eliminate all subjectivity, or previous coach/player experiences, the selection process will attempt to only reflect on-ice performance during the evaluation period.
- The selection criteria developed for each age category will be consistent for all players at that level. All evaluations will be documented to ensure consistency in the evaluation process.
- All attempts and efforts will be made to ensure that the evaluation process is impartial and unbiased.

1.4. Evaluation Committee

Each division shall have an Evaluation Committee consisting of the Division Director, its Division Vice President and a member of Hockey Operations. The Evaluation Committee has the authority to make decisions during the evaluation process to ensure that the evaluation process is carried out in a fair manner. The decisions of the Evaluation Committee during the evaluation process are final.

1.5. Grievance Committee

The Grievance Committee will consist of the non-relative Division Vice-President, the SPMHA General Manager, and the SPMHA President.



1.6. Evaluation Format

- **Discovery** - There will be no evaluations for this division.
- **U7** - This division will utilize *Time Trials* only. Balanced teams will be created based on Time Trials data.
- **U9** - Evaluations will consist of Time Trials followed by evaluation games. Time trials results determine placement for evaluation games only. Evaluation game results determine final team placement.
- **U11AA** - Tryouts for U11AA will be a separate evaluation process occurring *prior* to the evaluations for the U11 Community programs. Registered participants will be placed into balanced tryout teams based on a defined playing level matrix, and will play a 3 game evaluated round robin series followed by two rounds of player releases. Players should be rotated through forward and defensive positions, though goaltenders will be designated at the time of registration and evaluated as goalies only.
- **U11** - Evaluations will consist of Time Trials followed by evaluation games. Time trials results determine placement for evaluation games only. Evaluation game results determine final team placement. Players should be rotated through forward and defensive positions. Players may be designated as a goalie, and be evaluated as such, though their player evaluation score will determine if they are able to play a non-goalie position when not playing goaltender on their team.
- **U13 Competitive (Tier 1)** - Tryouts for U13 Competitive will be a separate evaluation process occurring *prior* to the evaluations for the U13 Community programs. Registered participants will be placed into balanced tryout teams based on a defined playing level matrix, and will play a 3 game evaluated round robin series followed by two rounds of player releases. Players will be required to indicate their position (forward, defense, or goalie) at the time of registration and will be evaluated according to their position.
- **U13** - Evaluations will consist of Time Trials followed by evaluation games. Time trials results determine placement for evaluation games only. Evaluation game results determine final team placement. Players will be required to indicate their position (forward, defense, or goalie) at the time of registration and will be evaluated according to their position.
- **U15 & U18** - Evaluations will consist of evaluation games and practices (in some circumstances). Evaluation game results determine final team placement. Players will be required to indicate their position (forward, defense, or goalie) as well as checking preference (checking or non-checking) at the time of registration, and will be evaluated accordingly.

1.7. Processes Subject to Change

The policies, procedures and fees contained within this document are subject to change without notice, if necessary. The SPMHA Executive reserves the right to make these changes, as deemed necessary, in order to comply with the goals set out, and approved, regarding the evaluation of all registered players and goalies.



2. PROCESS

2.1. Timelines

Evaluation timelines will be set from year to year based on ice availability in conjunction with league start dates for each division. Every effort is made to ensure that teams are finalized at least seven (7) days in advance of league play, allowing time for practice(s) prior to gameplay.

Below are the general timelines based on prior league history

- U7 Evaluations - Last weekend in September
- U9 Evaluations - Starting Mid September
- U11AA Tryouts - Starting Late-August
- U11 Evaluations - Starting Mid September
- U13 Evaluations - Starting Early September
- U15 Evaluations - Starting Late September
- U18 Evaluations - Starting Late September

2.2. Transparency and Impartiality

- The evaluation process is intended to be fair to all players, and as transparent and impartial as reasonably possible.
- Under absolutely no circumstance will a parent be permitted to evaluate their own child. All efforts will be made to avoid a parent evaluating in an age category, tier and/or position in which their evaluation score may influence the placement of their child. Should the unlikely situation occur in which a parent is in a position to provide evaluation results for their own child and does so, those results will be immediately removed by the Division Director. That parent's evaluation results for all other players will be reviewed and will be considered for removal at the discretion of the Evaluation Committee.
- The SPMHA Evaluations Manual will be posted on the Association website so that all parents and players are able to understand the evaluation process. The VP of Hockey Operations, the Division VPs and the Division Directors will be available to any parent that has a question about the evaluation process.
- Time Trials results sharing: For purposes of transparency, the results of Time Trials may be shared with individual registrants in the U9, U11 and U13 divisions at the discretion of the Association. Results of Time Trials for U7 will not be shared. These Time Trials are specifically for the creation of balanced teams.

2.3. SPMHA Required Apparel

- The Time Trials process uses a 100% objective method. Players can arrive for these sessions in any apparel that they choose.
- For U9 through U18, once the evaluation games begin, players are representing SPMHA, not other programs, and should do so with a sense of pride. Players must only wear SPMHA issued jerseys and hockey socks throughout the evaluation game process. This includes SPMHA game socks or solid-colored practice socks in white or black. Gamewear from third-party programs, clubs or associations is prohibited. This is to ensure that there is no subjective influence on an evaluator via representation of



another program. Players will be provided with a numbered game jersey at check-in. SPMHA may have a supply of game socks on hand at check-in that can be purchased if needed. It is highly recommended that a player come prepared with a previous pair of SPMHA game socks or solid-coloured practice socks in white or black. These will be acceptable should SPMHA run out of game sock inventory. Should a player refuse to wear SPMHA apparel during an evaluation game, that player may not receive an evaluation score for that respective game.

- SPMHA sanctioned gamewear may be made available prior to evaluations at check-in. SPMHA socks may be provided to a player (subject to supply) at their first scheduled session (warm-up skate, Time Trials or evaluation game).

2.4. Player Positions

- In the U9 Age Group, positions will not be assigned to players
- In the U11 Age Group, players will be assigned a position by the volunteer working the bench of the respective evaluation game. The player is expected to play the position that they are assigned for that respective shift. The bench staff will work on a best-efforts basis to ensure that every player gets as close to an equal rotation at the forward and defensemen positions. Players are to be evaluated on their game understanding respective of all positions.
- In U13, U15 and U18, players will be required to indicate their position (forward, defense, or goalie) at the time of registration and will be evaluated and ranked according to their position.

2.5. Evaluation of Players Released from SPKAC

The Association recognizes that due to the nature of the SPKAC program, the timing of releases from that program are somewhat unpredictable due to the effect of releases from teams outside of the SPKAC program such as other AAA teams and Junior level teams. As such, players released from SPKAC may miss and/or be unavailable for some, or all, of the Association's evaluations for a particular level. Effective communication and collaboration between the SPKAC Hockey Operations (Head Coach, Evaluators and Division Director) and SPMHA Hockey Operations (VP Sr, VP Hockey Operations and Division Director) is key to the successful placement of released individuals.

The Association has developed the following guidelines for communicating with, and the evaluation of, SPKAC players:

- Prior to August 1 of the current hockey season, the Association's President and VP Senior shall meet with SPKAC to determine a cut off deadline for U15 (the "U15 Cut-Off Date") and U18 (the "U18 Cut-Off Date") in accordance with this Article. In regards to U13, SPKAC shall complete its U13 evaluations prior to the commencement of the Association's U13 evaluations and as such, the policies set out herein are not applicable to releases from the SPKAC U13 program.
- SPKAC shall inform all released players that they must contact the Association's VP Senior and the appropriate Division Director, within five (5) days of their SPKAC release date, of their intention in regards to playing with the Association, and must appear in the next grading session following such. The provisions of this Article (2.5) shall not be available to any player that does not provide such notification within such five (5) day period or does not appear in the next grading session following such notification.
- If a player is released by SPKAC prior to the commencement of the Association's evaluations for such division commencing then such player shall be ONLY evaluated pursuant to the Association's evaluation procedures for such division.



- If a player is released by SPKAC before the final grading game evaluation, the player shall be evaluated during such remaining grading game evaluation ice time. Provided the player attends such grading game evaluation, the VP Senior and the applicable Division Director shall utilize such grading game evaluation as well as feedback or comments from SPKAC Evaluators and Coaches in determining which initial grading team such player should be placed. If such player does not attend such grading game evaluation ice time, this Article(2.5) shall no longer be applied to such player and they shall be treated like a regular Association registrant that missed grading sessions.
- If a player is released by SPKAC *PRIOR TO* the final grading game evaluation of the Association's top 2 tiered teams (ie. U18 Tier 1 and 2) but prior to the U15 or the U18 Cut-Off Date, as applicable, the VP Senior and the applicable Division Director shall utilize such final grading game evaluation as well as feedback or comments from SPKAC Evaluators and Coaches in determining which initial team such player should be placed for the season. If said player or goaltender is considered to be a "final cut" (ie. last 1-2 skaters or goaltenders to be released) the expectation is that they shall be placed for the season no lower than the Tier 2 level.
- If a player is released by SPKAC *AFTER* the final grading game evaluation of the Association's top 2 tiered teams (ie. U18 Tier 1 and 2) but prior to the U15 or the U18 Cut-Off Date, as applicable, the VP Senior and the applicable Division Director shall utilize feedback or comments from SPKAC Evaluators and Coaches in determining which initial team such player should be placed for the season. If said player or goaltender is considered to be a "final cut" (ie. last 1-2 skaters or goaltenders to be released) the expectation is that they shall be placed for the season no lower than the Tier 2 level.
- Notwithstanding all of the above, if the SPMHA and SPKAC Hockey Operations Directors advise and recommend that such player is placed in a position other than as determined by this policy such applicable SPMHA Division Director shall be entitled to place such player according to such.
- Following the U15 Cut-Off Date and the U18 Cut-Off Date, as applicable, any further SPKAC releases will be placed in accordance with the Association's prior policies and they shall be treated like a regular player registrant that missed evaluation sessions.
- For clarity, players released from SPKAC U18 and U16 shall be treated independent of each other meaning when comparing placement releases from U18 will be compared to previous U18 releases and players released from U16 shall be compared to previous U16 releases.
- In the event the Association needs to release players from its program in accordance with Article 2.6 below, released players from SPKAC shall be treated the same as all other Association registrants in determining which players are released.

2.6. SPMHA Releases

When determining the number of teams in each division each year, the Association's Division Directors, in conjunction with the appropriate Vice President, shall work to structure as many viable teams as the number of registrants will permit, recognizing that too few players on a particular team will create a team that may not be viable. Teams will not be set with insufficient players to be a viable team. It is recognized that the number of players required to form a viable team will increase as the age of the players increases. Best efforts will be given to having a minimum of 15 skaters plus a goalie for all teams in U11 and above. U7 teams will be based on the number of registrants and U9 teams will target team sizes of 18 players to accommodate the gameplay model. However, if during the registration and evaluation process, the number of registrants in a particular category does not permit the creation of a number of viable teams that would allow all players to be placed on teams, decisions regarding the release of one or more participants will be made under the following guidelines:



- A. The Division Director will communicate to all participants as soon as practical in the evaluation process if the Association anticipates having to release any participants at that level, and will inquire as to whether any of the players are willing to voluntarily be released to another minor hockey association.
- B. If the need to release players remains despite voluntary releases, priority for placement on teams will occur in the following order:
 - Priority of placement in the Association will be assigned to participants based on the greatest number of years that a player has been registered with the Association as a proportion of the total number of years that a player was able to play hockey (excluding the Discovery Program), including SPKAC. Those players with the lowest proportion of registered years with the Association would be the first to be released.
 - For example, a second year U11 player who has played with the Association for 2 years would have a calculated proportion of 33% based on 2 years in SPMHA divided by 6 total eligible years to play (2 years U7, 2 years U9 and 2 years U11).
 - If after taking into account the relative number of years that players have been registered with the Association as set out above, there are a number of players with equal time spent in the Association, priority will be assigned to participants based on the date of registration for the current season, with either the Association or SPKAC, and having either paid or made arrangements to pay for such registration, with the earlier registrants receiving priority over later registrants.
 - If after considering the factors above, players have equal time with the Association and registered at the same time, the Division Director, in conjunction with the VP, will do a random drawing of those players to determine who will be released.

2.7. Team Size and Tiering

The number of tiers, and number of teams in each tier, is regulated by the [Alberta One Tiering Model](#) as determined by Hockey Alberta. The number of teams, and placement of teams, for the league tiering round will be communicated to the parent group during the evaluation process and is subject to change based on registration numbers. The number of players on each team is determined by the Evaluation Committee, and their decision is final.

2.8. Movement

The evaluation process is structured to give players the opportunity to move between tiering groups based on their performance. While initial placement in U9-U13 is designed to promote upward movement, players may be moved up or down from a group at any time during the evaluation process. Decisions on player movement are made after each session, and any movement will be applied for the next evaluation session.

2.9. Warm-Up Sessions

All players in U9 to U18 will be offered a minimum of one (1) warm-up ice session prior to their respective evaluation session. A warm-up session may consist of a variety of different elements such as Time Trials drill practice, scrimmage, and individual skill development, pending the age group's evaluation process.



2.10. Initial Time Trial Group Placement

- **U7** - Players will be placed into evaluation groups alphabetically by last name.
- **U9-U13** - To facilitate efficiency of ice usage, and to group players with similar skill, Division Directors will group together players for Time Trials with roughly similar skills based on a matrix determined by the players' tiering placement in the previous season. As previously noted, Time Trials will determine the player placement for evaluation games only.
- **U15 & U18** - These divisions do not complete Time Trials.

2.11. Time Trials

- The U7 division will utilize Time Trials to aid in the creation of balanced teams. Results will be used to ensure an equal distribution of skill across all teams. Teams in U7 are not tiered. Players will be distributed to teams according to their evaluated individual skill levels, not game play skill sets.
- U9, U11 & U13 Divisions will utilize Time Trials to determine placement for evaluation games only. All players within the same division will be tested utilizing the same set of drills. Players will be ranked based on the Time Trials results, and this ranking is used to form the initial evaluation game groupings.
- Player times will be verified by the Evaluation Committee and/or the General Manager and then ranked within their division based on a weighted cumulative ranking formula. Cumulative ranking takes a player's rank against peers in each individual drill and combines them (with drill weighting) for an overall rank score.
- SPMHA uses the SportTesting Sport Gate laser timing system to test our players. SportTesting is a leading provider of sport specific athletic assessment tools, and is in wide use locally and across Canada. The accuracy of this equipment is second to none, and ensures that every player is given an equal opportunity to be placed accurately.
- The laser equipment is expensive, and players must ensure that they are always on their best behavior. Any player that fails to act appropriately will be sent off the ice. We ask that players not shoot pucks while on the ice to ensure that they do not hit and/or knock over the lasers.
- In the event that the laser equipment fails or is unavailable, on-ice volunteers will complete manual timing of players utilizing a dual stopwatch method. This will be done at the discretion of the Evaluation Committee and/or General Manager.
- Each Time Trials session will have a trained on-ice volunteer group (including a Session Lead and Station Leads). These volunteers are responsible for: the setup and management of the on-ice equipment, player warmups, drill demonstration, line operation, disqualification detection and player behavior management.
- At least two SPMHA Executive Members (may include SPMHA Admin) will be positioned off-ice to oversee and coordinate the Time Trials process, ensure proper overall timing system operation, verify results as they come in and manage any disqualifications.
- Upon check-in, players will be provided an RFID (Radio-frequency identification) device and unique identifying number. The unique identifying number will be used to identify players throughout the evaluation process. The RFID device is unique to each player and must be scanned-in prior to completing



each drill attempt. All RFID devices must be returned as the players leave the ice at the conclusion of their evaluation session.

2.12. Drills

- Drills will be selected, tested and finalized by SPMHA Hockey Operations. The drills test age-appropriate Hockey Canada-defined core skills including, but not limited to, skating speed, agility, edge control and puck handling. The drills that will be tested may vary depending on each age group. A link to evaluation drills can be found in Appendix 1 at the end of this document.
- On evaluation day, the Session Lead will run a brief on-ice warmup for the players. The Session Lead will then instruct the players on how to use their RFID device prior to an attempt and how to recognize when the timing gate system is prepared to record that attempt.
- The Station Leads will provide the group with one (1) demonstration of the drill prior to the commencement of player attempts. Players are required to pay attention to the demonstration to ensure that they understand the drill pattern.
- In a circumstance where a Station Lead has a child on the ice during the Time Trials evaluation, that Station Lead is not to operate a line in which their own child is being evaluated, regardless of the objective nature of the Time Trials evaluation.
- All on-ice volunteers and off-ice SPMHA Executive Members facilitating the Time Trials sessions are instructed to abstain from unnecessary communication with players during the Time Trials sessions. This includes, but is not limited to, any form of coaching or encouragement during a player's attempt.
- Players will only get two (2) attempts to complete each drill. The best time of the two attempts for each drill will be used for their final score. If a player falls during an attempt, they must get up and finish the drill. A disqualification will only be assessed if the drill pattern is not completed properly.
- The laser timing system is designed to start and stop timing when the player's torso breaks the laser beam. Do not instruct kids to reach out and use their sticks thinking it will give them an advantage. It will actually end up giving them a slower time as that motion will slow them down.
- When players are completing drills using pucks, the player must always keep the puck on their stick by either stick handling, pushing or dragging the puck. The player cannot shoot the puck ahead of them and skate up to it.
- The puck must go around the outside of the flags when completing the continuous crossovers, forward weave agility and transition agility drills. If the puck does not go around the flags, that attempt will be disqualified.
- In the case that a player is disqualified (unable to complete the drill pattern properly) on both attempts, they will be assigned a score equal to the lowest completed score for all players for that respective drill in that respective session. This would only be applied in the case where the player does not have a completed attempt. If they were to have a completed attempt, even with a fall or a lost puck, that score would be used.



2.13. Evaluation Game Structure

Evaluation games introduce subjective scoring into the evaluation process. SPMHA puts emphasis on subjective criteria during the evaluation process. This may include, but is not limited to, *skating, game understanding, technical skills, compete, and checking skills (where applicable)*. Each gameplay model has a target number of players per roster however it should be noted that pending registration numbers, an evaluation team may have more players or fewer players than the target number.

U9 - Half-Ice Free-Flow Game Model

Evaluation teams will be created with desired roster sizes of sixteen (16) players. These teams will be randomly split into two groups of eight (8) for each game. These two groups will participate in two simultaneous half-ice games with another team. The format will be 4-on-4 hockey with no designated positions and 3'x 4' nets (if available). The net size is the mandate of the Edmonton Federation Hockey League. Shifts will run in 90-seconds intervals, giving each player the same amount of gameplay while playing every second shift of the game. The rules of gameplay will follow the Hockey Alberta Intro to Hockey Half-Ice gameplay model. Players will not be required to participate as a goaltender during the evaluation game process. Evaluation games will utilize shooter tutors when volunteer goalies are unavailable or at the discretion of the Division Director. A reminder that there is no goaltender evaluation at the U9 age category.

U11AA - Standard Game Model

Grading games

Evaluation teams will be created with desired roster sizes of fifteen (15) or more players. These teams will participate in (3) standard 60-minute full-ice games. The format will be 5-on-5 hockey in which players will be evaluated respective of their designated position. Goalie playing time will be determined by the number of goalies assigned to a team, however each goalie will get a minimum of 1 period of play per game. SPMHA would seek arms-length evaluators to attend all games during grading games. The evaluators would be tasked with skill assessment and providing a relative ranking to SPMHA of the participants. This would include a skater ranking based on the criteria outlined in the SPMHA Evaluation guide. SPMHA would have discretion as to whether to utilize the Team Genius software or a separate proposed system by the evaluators. The same process would be utilized with goalie skills evaluation in a separate goalie evaluation session. Upon completion of grading games, the evaluators would provide all requisite information (including any commentary on players) to SPMHA. This information would become the primary source for decision-making, a roster of 36 skaters and 6 goalies will be moved to the Top 42 game.

Top 42 game

Two teams of 18 skaters and 3 goalies will be created for the purpose of identifying the final roster sizes. The format will be 5-on-5 hockey in which players will be evaluated respective of their designated position. Each goalie will get a minimum of 1 period of play.

U11 Community - Full-Ice Free-Flow Game Model

Evaluation teams will be created with desired roster sizes of ten (10) players and one (1) goaltender. Each game will feature two 12-minute halves. Goalies will switch at the half. There will be three 30-minute game slots within a 90-minute ice slot. The format will be 5-on-5 hockey in which players will be asked to rotate through all positions during the game. Shifts will run in 60-seconds intervals, giving each player the same amount of gameplay while playing every second shift of the game. The rules of gameplay will be modified to maintain the



flow of the game and to limit stoppages. This includes no offside, no icing and no faceoffs (except to start each half). Egregious infractions will be noted by the on-ice official and will result in a play-it-live penalty shot with everyone else chasing. If a goal is scored, players on the scoring team are required to clear the red line before engaging the other team. On the buzzer, the puck is to be left where it is and players are to exit the ice while the new line entering the ice is able to play-the-puck-live.

U13 Competitive (Tier 1) - Standard Game Model

Grading games

Evaluation teams will be created with desired roster sizes of fifteen (15) or more players. These teams will participate in (3) standard 60-minute full-ice games. The format will be 5-on-5 hockey in which players will be evaluated respective of their designated position. Goalie playing time will be determined by the number of goalies assigned to a team, however each goalie will get a minimum of 1 period of play per game. SPMHA would seek arms-length evaluators to attend all games during grading games. The evaluators would be tasked with skill assessment and providing a relative ranking to SPMHA of the participants. This would include a skater ranking based on the criteria outlined in the SPMHA Evaluation guide. SPMHA would have discretion as to whether to utilize the Team Genius software or a separate proposed system by the evaluators. The same process would be utilized with goalie skills evaluation in a separate goalie evaluation session. Upon completion of grading games, the evaluators would provide all requisite information (including any commentary on players) to SPMHA. This information would become the primary source for decision-making, a roster of 36 skaters and 6 goalies will be moved to the Top 42 game.

Top 42 game

Two teams of 18 skaters and 3 goalies will be created for the purpose of identifying the final roster sizes. The format will be 5-on-5 hockey in which players will be evaluated respective of their designated position. Each goalie will get a minimum of 1 period of play.

U13 - U18 Community - Standard Game Model

Evaluation teams will be created with desired roster sizes of fifteen (15) or more players when possible, including 9 forwards and 6 defense. These teams will participate in standard 60-minute full-ice games. The format will be 5-on-5 hockey in which players will be evaluated respective of their designated position.

2.14. Initial Evaluation Game Placement

The initial placement of players into groups for the purposes of evaluation games is based on the Time Trials results. These groups are not defined tiers. The grouping structure is used to promote the movement of players between groups depending on game play performance. The number of evaluation games can fluctuate based on the availability of ice and the number of registrants. After each defined round of evaluation games, player evaluation scores will be tabulated and player movement will occur between groups as noted in the player movement diagrams below. Note that players may move up or down depending on evaluation results. Injured, sick or absent players will be assigned subject to Article 2.16.

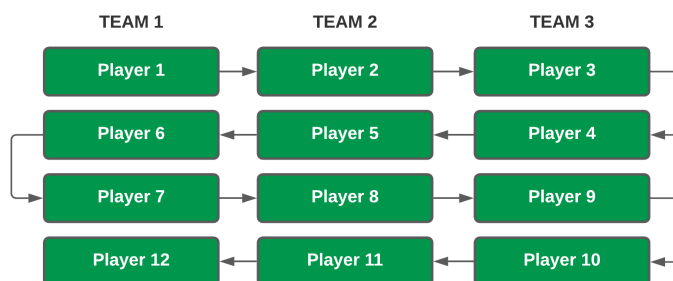
In the event that players are released from a separate evaluation stream (e.g., U13 Competitive) after the conclusion of community Time Trials, the Evaluation Committee reserves the right to place these players into an appropriate initial evaluation group based on their demonstrated performance in the preceding evaluation stream. Such placements will be made with the intent to align players with similarly skilled peers and to preserve



fairness and balance in the evaluation process. These players are not considered absent and are therefore exempt from the comparable player average provisions outlined in Section 2.16.

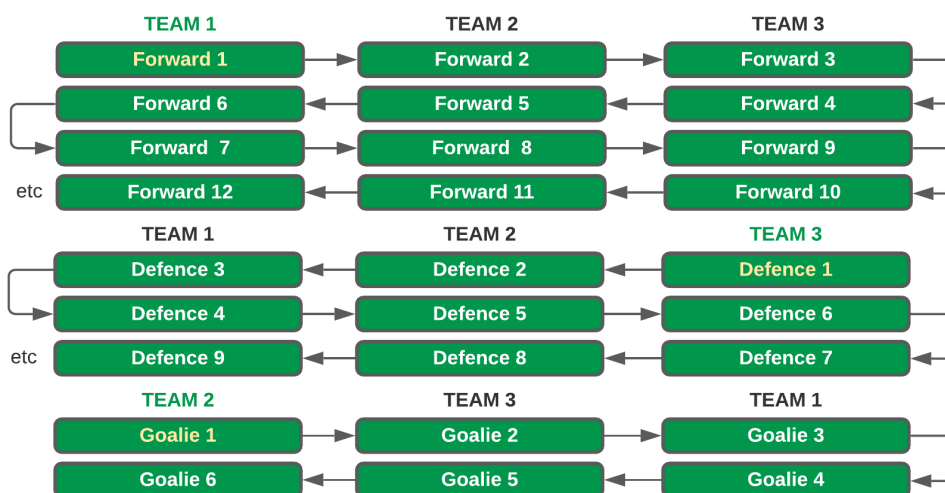
U9 & U11

After Time Trials, players will be ranked amongst their age category based on a weighted cumulative score. Division Directors will utilize this ranking list to place players in evaluation groups. Within an evaluation group, the Division Directors will create evaluation teams using a serpentine method. There will be a defined number of evaluation teams per evaluation group. Initial placement for evaluation games will be completely objective and not open to appeal.



U13

After Time Trials, players will be ranked amongst their age category based on a weighted cumulative score as it pertains to their designated position (forward or defense). The Division Director will utilize this ranking list to place players in evaluation groups. Within an evaluation group, the Division Director will create evaluation teams using a serpentine method. There will be a defined number of evaluation teams per evaluation group. Initial placement for evaluation games will be completely objective and not open to appeal.



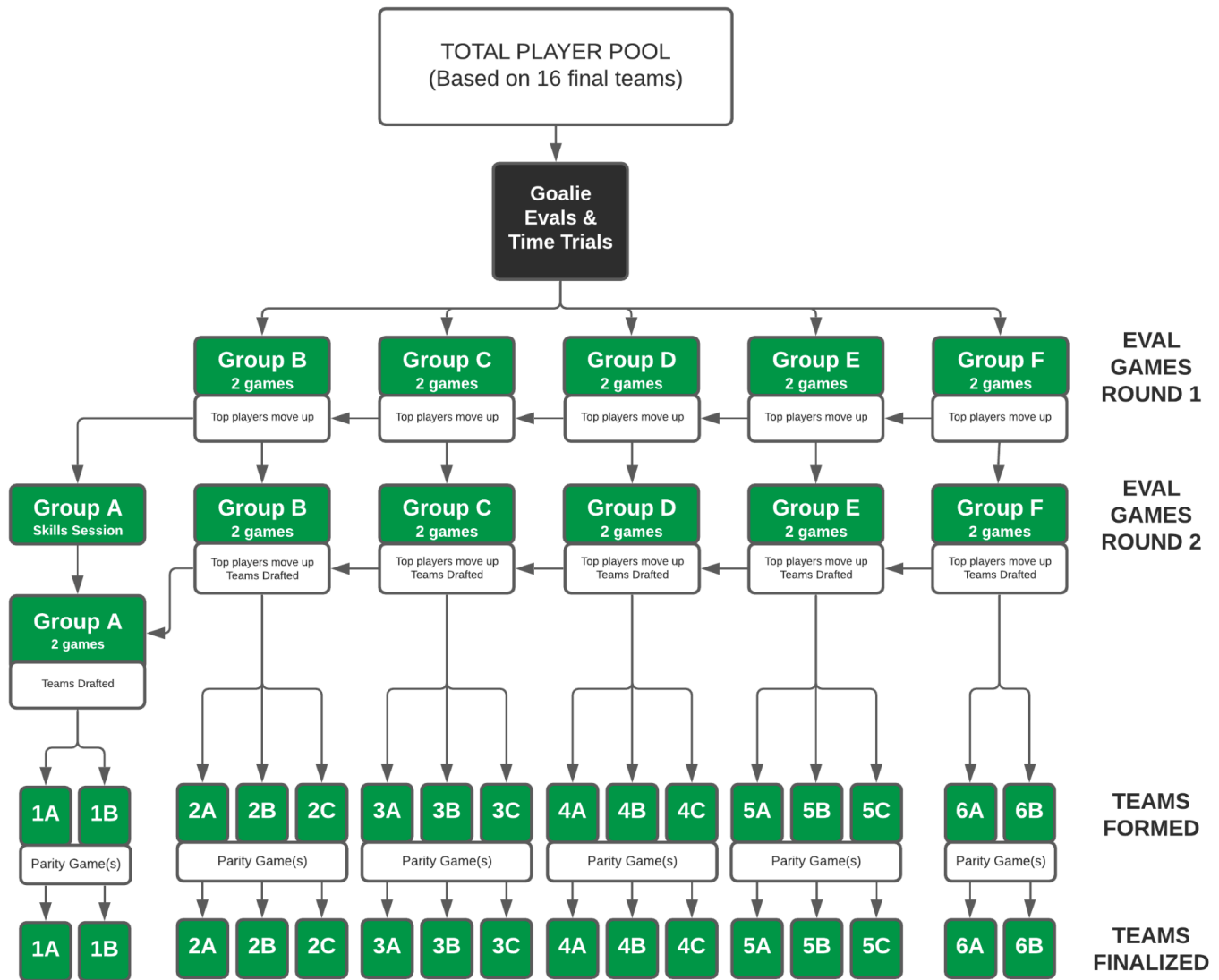
U15 & U18

Players will be grouped initially into checking or non-checking groups based on preference indicated at registration. The groups are then split into balanced parity teams considering player position and prior season placement to begin gameplay evaluation. Penalty shots will be used when an infraction is called.

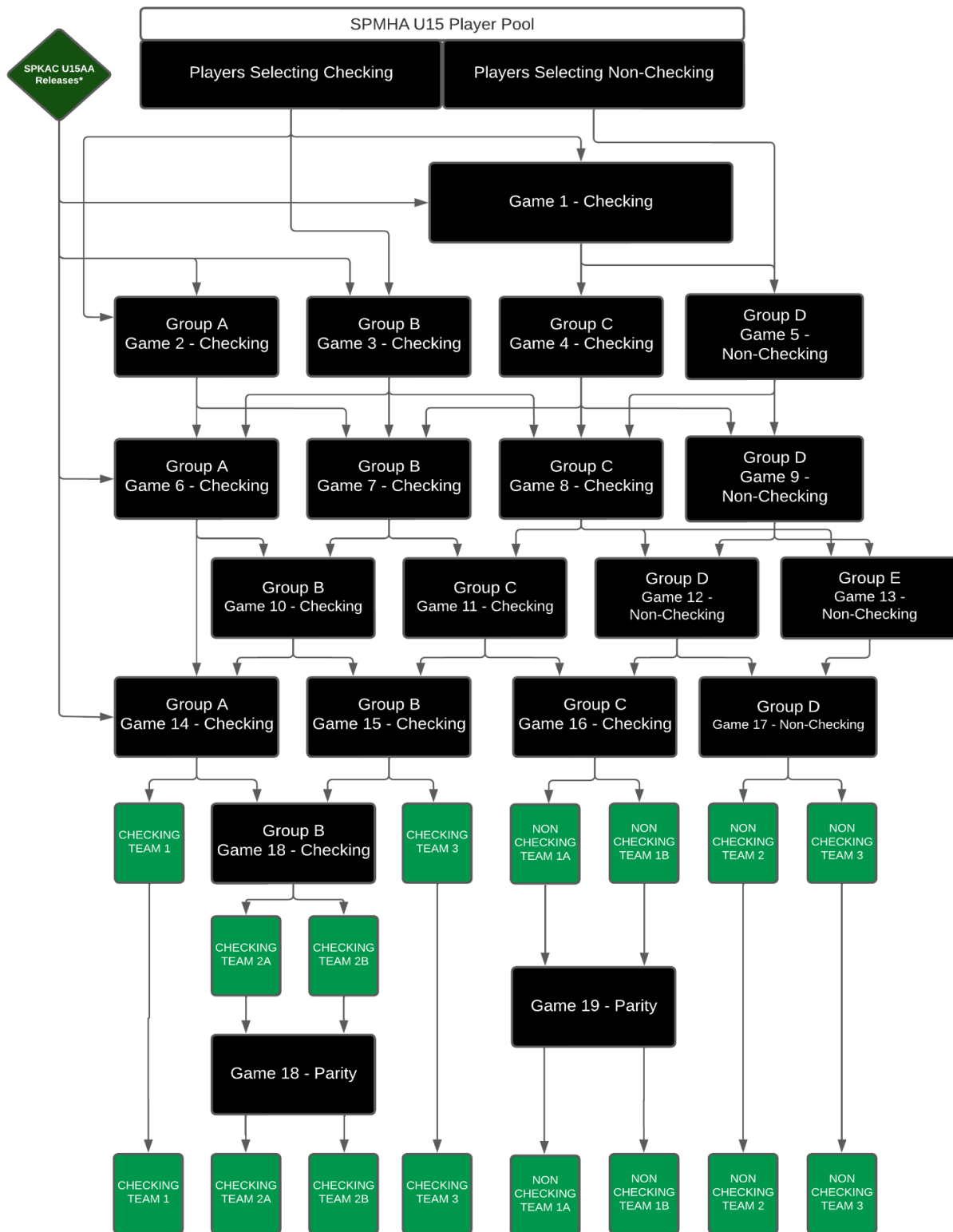
After the first round of evaluation games, players will be tiered into groups as per the Sample Player Movement Matrix for the respective division noted below.



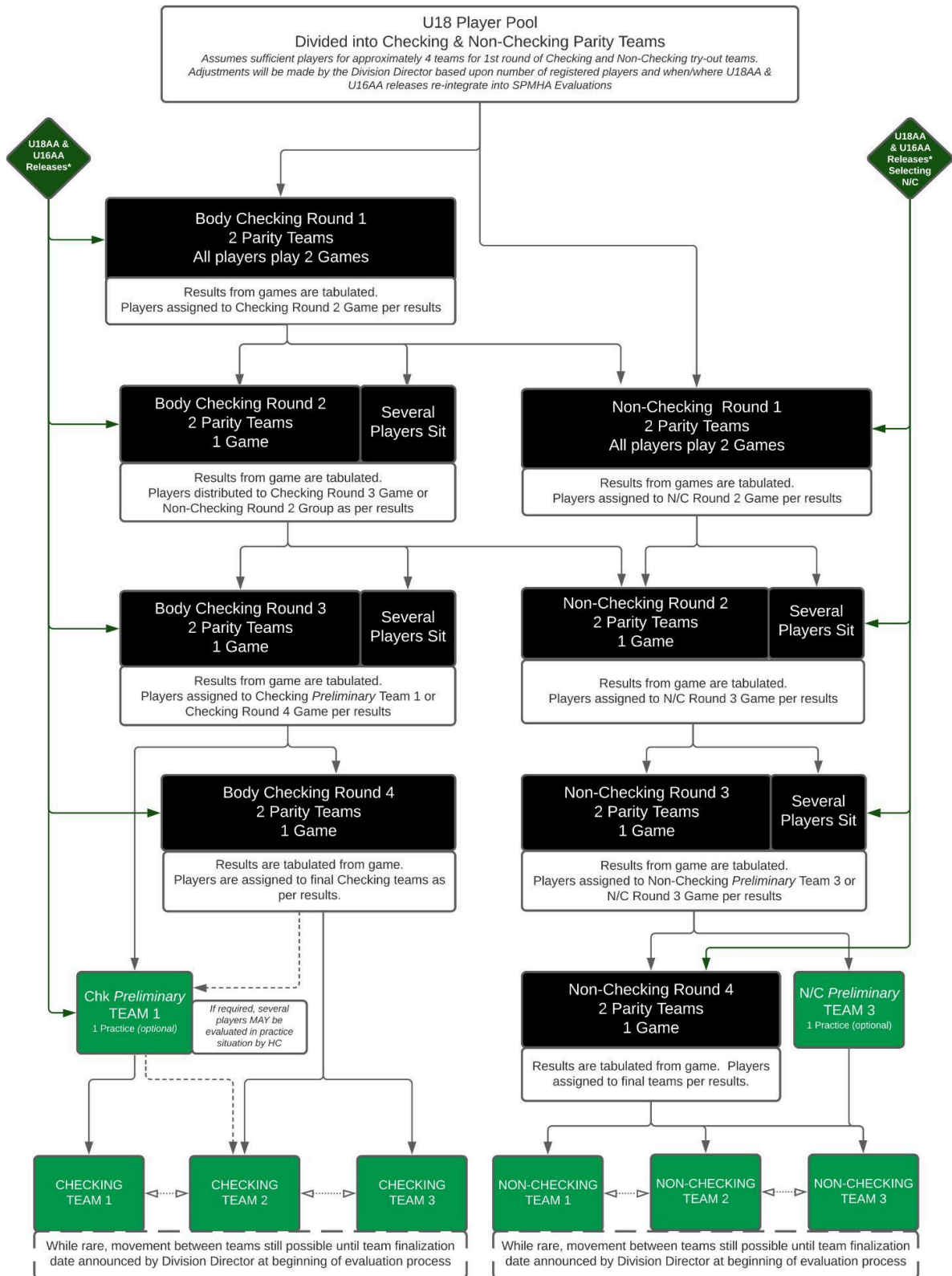
Sample U9, U11 & U13 Player Movement Diagram



Sample U15 Player Movement Diagram



Sample U18 Player Movement Diagram



2.15. Goaltender Evaluations

The evaluation of goaltenders is made difficult due to the specialized nature of the position and the unique abilities, and experience, required of the Evaluators. Goalie evaluations will be completed in the U11-U18 divisions. There will be no dedicated goalies at the U7 & U9 divisions, and as such, goaltenders will not be evaluated at those levels.

A goalie-specific skill session to decide initial placement into the evaluation process will be performed at the U11-U18 levels by the Hockey Improvement Director - Goalie and the selected Lead Goalie Evaluators. This session(s) will be adhered to by the Association based on the recommendations of placement criteria as set out. A majority of goalie evaluators will be paid and independent at every level. Additionally, goalie evaluations will consist of multiple drills evaluating multiple factors of goaltending as outlined in Appendix 1 with at least one drill focused entirely on goalie movement/skating at all levels within the goalie evaluations.

Thirty minutes prior to each Goalie Placement Session a brief parent meeting will be held with the goalie parents within that division and the Hockey Improvement Director - Goalie and/or someone within the Goalie Evaluation Process. It is expected that at least 1 parent attends this meeting.

Goalies can expect upward and downward movement through the groups depending on how they rank in each ice session. The Goalie Placement Skate is intended to generally place the goalies at the level they are deemed to belong to with the subsequent evaluation sessions designed to provide a more rigorous placement. In general, goalie movement will mirror the process in place for player movement, including the movement of the top goalie in each group to move up and the bottom goalie to move down. It is possible for the middle-ranked goalie in each group to not move. For U11 & U13 age categories, every effort will be made to promote upward movement, however due to the impact of physical development and position requirements, along with changes in goalie registration numbers, movement to lower tiers is possible and is not a reflection of a decline in the goalie's skills/abilities but a reflection of positioning in the stack rank of other goalies within the age category.

All goalie placement will be subject to **Article 4.8 - Goaltenders** as outlined in the [SPMHA Policies and Procedures Manual](#). This Article outlines the eligibility for goalies to participate as a skater within their team's goalie rotation subject to division and tier placement.

The number of goaltenders per team will vary depending on the number of eligible candidates and the number of teams in a particular age group. SPMHA will indicate to goalies following the pre-evaluation sessions whether they can reasonably expect to be placed on a team as a goalie through the evaluation sessions. In instances where it is likely that a goalie will not be placed on a team, the parents will be informed at that point such that the goalie can then be evaluated as a player or elect to be released to another Association. This will occur when there are more goalies interested in playing the position than there are positions available on teams.

The general guideline, if enrollment permits, is 2 goaltenders per team for all teams within each age group. This is done to ensure all of our goaltenders are given the opportunity to develop at the highest level possible. If the enrollment numbers do work out such that there are not two goalies per team, then it will be at the discretion of the Hockey Improvement Director - Goalie and the Division Director to determine which team(s) should be allotted one goalie. It's important to note that Goalie shortages for any Division will skew the overall placement process. For example, if SPMHA is short 4 or 5 goalies in the U13 Division, a goalie's final placement in Group B could potentially mean that he/she, if ranked lowest in that group, could end up on Team 4 or 5 due to league requirements for 1-goalie teams and affiliations.



2.16. Injured, Sick and Absent Players

- Injured, sick or absent players will be treated as fairly as possible. The Evaluation Committee will make decisions on the placement of players that are injured, sick or absent. The decisions of the Evaluation Committee will be final.
- If a player misses Time Trials, a *Comparable Player Average* will be taken into consideration to assign that player a weighted cumulative score. The player's prior season Time Trials results will be reviewed to determine comparable players. To be considered a comparable player, two conditions must be met: (1) The comparable player must share the same birth year as the injured/sick/absent player; and (2) the comparable player must have participated in this season's Time Trials. Based on the weighted cumulative score of the injured/sick/absent player in the prior season and the player's relative ranking to its peers, a group of six (6) comparable players will be selected to create the comparable player average. The 3 players immediately above and below (for a total of 6) the injured/sick/absent player's prior season rank after Time Trials will be selected and those players' weighted cumulative scores in this season's Time Trials will be averaged to provide a comparable score for the injured/sick/absent player that missed the Time Trials session. For example, Player X, who missed Time Trials this year, finished 60th in relative ranking in last year's Time Trials. The Director will select the 3 comparable players above and below that player from last year's Time Trials. The Director will average the results of those 6 players from this year's Time Trials and will assign that result to Player X.
- Players absent from any single evaluation game will remain in the group that they were in during the previous evaluation session. An absent player will be the lowest ranked player for that ice session.
- Players absent from more than one evaluation session could potentially be moved down from the group that they were placed in during the previous evaluation session.
- Players with multiple absences (Time Trials and evaluation games) may be placed in an evaluation group, or on a team, according to a variety of factors. These factors may include any of the following: the level that they played during the last season; prior coach feedback; and where other similarly ranked players were grouped. The Evaluation Committee will have the final say on a player's placement for evaluation games, or on a player's final team placement.
- Players that are injured before evaluations commence, and are therefore not able to participate in the evaluation process, may be placed on a team as determined by the Evaluation Committee. The Evaluation Committee will consider a number of factors including: the level that the player played in the previous season; prior season coach feedback; evaluation results from the previous season(s); and what team other similarly ranked players might be on. The decision of the Evaluation Committee will be final.
- Players that become injured or sick during the evaluation process will be paired up with the players who were ranked one ranking above them, as well as one ranking below them. The injured or sick player will mirror these players throughout the evaluation process and may be moved up or down throughout the process. In situations where the player ranked below the injured or sick player moves up a group, the injured or sick player is not guaranteed to move up. The player's movement is determined by the Evaluation Committee. The Evaluation Committee has the final say in all injured and/or sick players



placements, and their decision is final. The injured or sick player will not be notified of the players that he or she is mirroring.

- If a player misses an evaluation session due to injury, they **must** provide SPMHA with a Physician's note stating the player is safe to return to play before participating in the next available session.
- There will be no subjective consideration given for poor performance due to illness or injury.
- SPMHA strongly recommends that all players participate in all parts of the evaluation process if not injured or sick.
- SPMHA strongly recommends that no player participates in any part of the evaluation process while injured and/or sick. A Division director has the discretion to remove a player from an evaluation skate if it is determined that the player is participating while sick and/or injured. SPMHA values the health and safety of all of its players, volunteers and members.

2.17. Suspensions

Any player who receives a major penalty resulting in a game ejection during an evaluated ice session will be placed at the bottom of the group for that session and their infraction is subject to review by the Discipline Liaison Member. The VP Hockey Operations, Division VPs, Division Directors and/or an SPMHA Executive Member, as well as the on-ice Officials, have the right to eject players based on their on-ice actions. All decisions made by the VP Hockey Operations, Division VPs, Division Directors and/or an SPMHA Executive Member and/or on-ice Official are final.

2.18. Team Finalization

Discovery & U7

There are no evaluations, grading or tiering for Discovery. Discovery will focus on fun and games to get the players comfortable with the surroundings and to make the first hockey experience for these players enjoyable.

There is no tiering in U7. Player evaluations will be used for the purpose of forming balanced teams only. U7 players will complete a basic Time Trials session to determine their overall skill set. Players will then be ranked and placed on teams by a laddering process with the goal to be the creation of balanced teams within the Division. Directors may exchange players with another similarly skilled player to ensure a balanced distribution of Coaches among teams at each age category.

Regarding the number of players per team, at the Discovery and U7 levels, the normal guideline is 18-20 players per team in accordance with the Hockey Alberta Intro to Hockey Model. This may be varied at the Division Director's discretion in consultation with the appropriate Vice-President.

SPMHA will not consider friend requests for U7 except in the specific circumstances noted in Article 2.19.

SPMHA will allow one (1) reciprocal friend request per family in Discovery. Any additional requests or non-reciprocal requests will be disregarded and subject to approval from the U7 Division Director and VP Junior Divisions.



For U7 and Discovery, Head Coaches will be allowed to select one (1) Associate/Assistant Coach prior to final team assignments, provided that the request is reciprocal, subject to approval from the U7 Division Director and VP Junior Divisions.

U9 & U11

Upon the completion of the evaluation games, players will be ranked based on their weighted aggregate score. They will then be subject to player movement as outlined in the diagram in Article 2.14. Once player movement is completed, players will be assigned to a team utilizing the laddering method. Head Coach finalization will happen at this phase (see Article 3.5). Tiers with more than one team will play at least one parity game. Head Coaches will evaluate the parity game(s), along with the Division Director, to confirm parity among the established rosters. Head Coaches may recommend moving players between teams within the same tier in order to achieve balanced teams. All potential moves must be submitted by the Head Coaches to both the Division Director and Vice President - Junior Divisions for approval. Head Coaches do not reserve the right to recommend player movement from one tier to another and any such requests will not be considered by the Division Director. The Evaluation Committee has the final say in all team placements and their decision is not open to appeal.

Regarding the number of players per team at the U9 level, the normal guideline is 18 players per team in accordance with the Hockey Alberta Intro to Hockey Model. This may be varied at the Division Director's discretion in consultation with the appropriate Vice-President. At the U11 level, the normal guideline is 15 to 17 players per team. This may be varied at the Division Director's discretion (in consultation with the appropriate Vice-President) depending on total players in any division. In no case, however, will there be a significant difference between levels.

U11AA & U13 Competitive (Tier 1)

Upon completion of the Top 42 game, a roster of 36 skaters and 6 goalies will be determined for the purpose of final team roster selection. A committee made up of the VP JR divisions, respective Division Director and the team Head coaches will draft team rosters following in a serpentine fashion, starting with goaltenders. A coin flip between the Head Coaches will determine who has the first pick. The draft will be as follows:

- Winner selects Goalie 1
- Loser selects Goalies 2 & 3
- Winner selects Goalie 4
- Loser selects 1st Skater
- Winner selects Skaters 2 and 3
- Loser selects Skaters 4 and 5
- Process continues until 2 Goalies and 15 Skaters have been selected for both teams.

U13, U15 & U18

Upon the completion of the evaluation games, players will be ranked by position based on their weighted aggregate score. They will then be subject to player movement as outlined in the diagram in Article 2.14. Head Coach finalization will happen at this phase (see Article 3.5). Initial internal rosters will be set based on the players aggregate scores. Players will be placed in tiered groups, assigned to teams via laddering, and then balanced to account for coaching needs. Balancing is accomplished by moving a coach to a team as required (within the tier that that coach's player ranked), then swapping the coach's player with a similarly ranked player within the same laddering step from the coach's assigned team. Both the last forward spot and the last defense spot may be selected at the discretion of both the Head Coach and the Division Director. In laddering order, if applicable, Coaches may select any player within 5 ranked positions of the last assigned ranked player of the



same position, subject to approval by the Division Director and respective VP. These players must be placed on the respective coach's team.

Tiers with more than one team will play at least one parity game. Players may be moved between teams within the same tier in order to achieve balanced teams. Players are locked into their respective tier at this stage, but may move between teams. All potential moves must be submitted by the Head Coaches to the Division Director, and respective VP, for approval. The Evaluations Committee has the final say in all team placements and their decision is not open to appeal.

NOTE FOR U9 THROUGH U18 - Prior season's evaluation and placement **will not** guarantee a player a spot in the same, or higher, tier. As such, a player may be placed on a team in a lower tier than their previous season based on that player's current season's evaluations.

Regarding the number of players per team at the U13 level, the normal guideline is 15 to 17 players per team. The normal guideline for U15 and U18 divisions is 19 players per team (17 players and 2 goalies). This may be varied at the Division Director's discretion (in consultation with the appropriate Vice-President) depending on total players in any division. In no case, however, will there be a significant difference between levels.

2.19. Special Circumstance Placement Requests

In all circumstances, player ability and balanced teams will be the primary criteria for player placement. However, some accommodation may be made for parental requests in certain circumstances.

In terms of siblings, players in U7 will be placed on the same team. For U9 through U18, where appropriate, and at the discretion of the Division Director, parent requests for siblings to participate on the same team will be honored (unless this results in a player being expected to participate at a level above or below his evaluated ability). No parent requests for a player to participate above or below his evaluated ability level will be honored.

There are other circumstances that will be considered by SPMHA as it pertains to the specific placement of players. Upon completion of the evaluation games and placement onto teams for parity games, the Division Director will send an email notice to all members of the division requesting any applicable special circumstance placement requests. In all cases, any special placement requests must be submitted using [this form](#) **prior** to team finalization. The Division Director will have final authority on all player placements, subject to approval by the respective VP.

Requests that may be considered:

- Legal protection orders
- Prior documented player or parent conflicts that are likely to result in future conflicts
- Special hardship cases

Requests that will **not** be considered:

- Friend requests
- Preferred coach request
- Carpooling needs
- Work/School scheduling conflicts
- Personal travel requests



2.20. Underage Tryout Process

Hockey Canada programs and divisions are intended to focus on the overall quality of the hockey experience. Each age division has pre-defined goals and recommended focus areas of development. As a player moves through each age division, skills and knowledge learned in the earlier division are built upon in a systematic manner. There may be times when an individual player significantly exceeds the skill level of their age group and are also superior in skill and ability to the next division. In rare circumstances like this, it may be beneficial to the player and the Association to advance a division even though they are “underage”.

Movement of such a player will be considered under exceptional circumstances. Parents who, after discussion with their player, feel that their child is an exception, may make an application under this policy to advance their child. Players making application under this policy will possess the physical, psychological, social and educational maturity to match their superior hockey skills.

Criteria:

Applications will only be accepted for players meeting the following criteria:

- The player is entering their final year of their respective age-eligible division as determined by Hockey Alberta.
- Prior Season’s Evaluation Results: Proof of evaluation performance (where available) that identifies that the player significantly exceeded its peers during a recent evaluation process. For the application of a skater, it is suggested that the player ranked in the top 5% of evaluated skaters in the respective Association’s or Club’s evaluation process. This would need to be confirmed by the respective Association or Club if available.
- Letters of Recommendation: An application should include letters of recommendation. The sources of recommendation may include the previous season’s Head Coach, a member of the executive from the previous year’s Association or Club and/or an identified skills coach where deemed appropriate (i.e. goaltenders). The recommendations should identify justifiable reasons to support the player’s application as an underage player at an elite level of hockey. A letter cannot come from a parent/guardian that served in one of the identified roles.
- No application will be accepted if the older age category is capped for registration, and has an established waiting list of players.
- The number of underage tryout applicants per year will be subject to any restrictions established by Hockey Alberta as it pertains to such an application. Any exception above and beyond an established restriction will be at the discretion of the Association and subject to approval from Hockey Alberta.

Process:

All steps in the process must be followed or the player will be considered ineligible for the older division:



- Parents/Guardians must submit an [SPMHA Underage Tryout Application Form](#) with the corresponding support identified above in “Criteria” including the prior season’s evaluation results and letters of recommendation.

If the application is declined, the player is expected to register in their age-eligible division of play. If the application is approved, the next steps are as follows:

- Proof of existing Hockey Canada insurance is required prior to the player stepping onto the ice for evaluations. Note that this proof is not required prior to the submission of the underage application. This is obtained by registering with a Hockey Alberta member Association (i.e. SPMHA). The Association recommends that the player register in its age-eligible division within SPMHA.
- The player will be invited to participate in the older division evaluation process and will be assessed by the standards of that division and its respective evaluation process. This approval grants permission to the player to participate in evaluation pre-skates, Time Trials and the first round of evaluation game play (where applicable). The player's performance will be reviewed at that time and a decision will be made by SPMHA as to whether to allow the player to continue in the evaluation process or to assign the player to the age-eligible Division. This decision is final and not subject to appeal.
- To successfully evaluate for the older division, the conditions are as follows:
 - When trying out as a skater, the player must grade in the top one-third (1/3) of the highest ranked team(s) in the division; or
 - When trying out as a goaltender, (a) when there is only one team at the top level of play, the goaltender must grade as the top goaltender in the division; or (b) when there are two teams at the top level of play, the goaltender must grade as one of the top 2 goaltenders in the division.
- Where the above conditions are not met, the player will be assigned to their age-eligible division and subject to its evaluation process. If the older division evaluation process interferes with the evaluation process of the player’s age-eligible division, placement within the age-eligible division evaluation process will be subject to the same policy as those players that missed an evaluation skate(s) due to absence (Section 2.16).
- If the player is successful during evaluations and is selected to a respective team in the older division, in accordance with the identified criteria, the player will be monitored. If it is determined, in the opinion of the SPMHA Executive, that playing in the older division has negatively impacted the player, consideration may be made for the player to be reassigned to their age-eligible division. This would happen prior to the defined Hockey Alberta roster deadline date, which is November 15th of the current season. This would be communicated to the Coach and the player. The SPMHA Executive reserves the right to the final decision.

Cost:



- Participation in the older division tryouts may provide additional ice to the player that is not otherwise included in the age-eligible division registration fee. As a result, there may be an additional tryout fee for an underage applicant. This fee is to be determined by the SPMHA Executive from time-to-time and would be communicated by the Association to the applicant upon the approval of the application. This fee would be due prior to the player stepping foot on the ice. This fee is non-refundable.
- If approved to play in the older division, SPMHA Administration will contact the family to settle any additional registration fees that accompany the older division.
- If the evaluation is unsuccessful, the player will be assigned to the age-eligible Division and there will be no additional fees assessed.
- All players are subject to the respective refund policy of SPMHA throughout the process.

General:

If the underage applicant is successful in the older division evaluation, there are a couple additional items of note:

- Approval will only be granted for one year;
- The player must play on the top tiered team(s) of the division;
- The player will not be affiliated to any other teams; and
- The player will count towards the team's roster limits.



3. ADMINISTRATION

3.1. Evaluator Selection

- Evaluators must have an appropriate background to effectively evaluate player skills and performance. Preferable background characteristics can include, but are not limited to, the following:
 - Experience with player evaluation and performance systems;
 - Suitable background in hockey either as a player or as a coach;
 - Knowledgeable persons that are not stakeholders in the division being evaluated;
 - Players or Coaches from other levels of hockey programs;
 - A willingness to evaluate players in categories in which they do not have a child registered.
- As much as possible, there should be a consistency of Evaluators for a given age group or division. This continuity ensures that the players are being observed by a group of Evaluators who have a benchmark for performance and knowledge of the overall ability of the group that they are observing.
- All evaluation games shall utilize a minimum of four (4) Evaluators (when available). The Association will make every effort to utilize Evaluators without children in the division being evaluated, but should this be unavailable for any reason, the Evaluation Committee will make every effort to ensure the Evaluators utilized are unbiased and unrelated to the players being evaluated.
- In order to assist in the recruitment of unbiased and consistent Evaluators, SPMHA may offer compensation for Evaluators who assist with evaluations outside of their own player's division. If compensation is provided, the rate (and means) will be set yearly depending on the Association budget.
- A majority of goalie Evaluators will be paid and independent at every level. No volunteer with a skater or goalie in the age group will be permitted to evaluate. Volunteers will need to attend training beforehand and will be reviewed to ensure proper qualifications. On-Ice volunteers are strongly recommended to have coaching experience and qualifications within SPMHA.

3.2. Evaluator Training

- All selected Evaluators are to make themselves familiar with the SPMHA Evaluators Guide. This guide will outline the required procedures, criteria & scoring methods, along with instructions on how to access the TeamGenius evaluation software used for game evaluations.
- SPMHA will host a yearly evaluator information session in order to review the evaluation processes and answer any questions.

3.3. Evaluator Code of Conduct

All SPMHA Evaluators will be expected to review and acknowledge the [SPMHA Evaluator Code of Conduct Form](#) prior to evaluating any sessions. SPMHA Evaluators will:

- Ensure compliance with the Sherwood Park Minor Hockey Association Player Evaluation Manual and Evaluators Guide.
- Review the evaluation criteria prior to the process to ensure that all Evaluators are evaluating the same skill with the same intent.



- Attend information and training sessions as required.
- Stay physically separate and independent from all other Evaluators, parents and spectators during the evaluation process.
- Provide a fair, unbiased and thorough analysis of all players.
- Not compare notes, scores or rankings with other Evaluators, unless requested to do so by the Division Director at the conclusion of the evaluation period.
- Maintain confidentiality of player scores and rankings at all times.
- Not share comments or opinions with any parents/players, or other interested observers.
- Review scores at the end of each session to ensure that there are no entry errors.
- Log out of the evaluation software at the conclusion of the session.
- Refer all questions, comments or complaints that they may receive to the Evaluation Committee without offering comment on the question or complaint.
- Not take any pictures or screen captures of evaluations related materials
- During the evaluation sessions, not use their mobile device for texting or phone calls except in case of emergency. Use of your mobile device should be for entering player evaluation scores and comments only.
- When applicable, in the case of an isolated skills session to substitute for an evaluation game, review the drill descriptions, setup instructions and key points identified in the practice plan, in order to ensure a clear understanding of the on-ice process.

3.4. Supporting Hardware/Software

3.4.1. SportTesting Timing Gate System

- SPMHA currently uses the SportTesting Sport Gate Laser Timing System for timed player evaluations. The system consists of the timing hardware, along with the *Athlete Manager* & *SportHub* software programs, which are used for session setup and player score aggregation. This system ensures highly accurate drill timing, and limits the potential of human error in timing acquisition and analysis.

3.4.2. TeamGenius Player Evaluation Software

- SPMHA currently uses TeamGenius Player Evaluation software for aggregating game evaluation scores. This software allows for real-time aggregation of scores and eliminates the need for paper evaluation scoring and data entry.

3.5. Coach Selection

Coaches are selected by the Coach Selection Committee as per the [SPMHA Coach Selection Policy](#).

3.6. Coach Selection U11 AA/U13 Competitive (Tier 1)

Coaches are selected by the Coach Selection Committee as per the [SPMHA Coach Selection Policy](#), however this may be completed in the spring in conjunction with the Spring ID skates. Head Coaches may be announced at that time.



4. COMMUNICATION

4.1. Member Communications

Information regarding a player's first skate (pre-evaluation skate, Time Trials or evaluation game) will be communicated via email. All future information regarding player movement will be made available via TeamSnap and through the SPMHA website. Players will receive communication via TeamSnap when group movement is complete, and the results may be posted on the SPMHA website. It is the responsibility of the parents/players to check the website/TeamSnap for information regarding group, skate time, location and jersey color. Please make sure you check all of the groups in your player's division for your player's next scheduled time.

4.2. Parent/Spectator Code of Conduct

All parents/spectators will be held accountable to the standards outlined in the Parent/Spectator Code of Conduct as outlined in the [SPMHA Conduct Policy](#). SPMHA recognizes that an evaluation decision may elicit an emotional response from a member and expects that member to act cordially, and with respect. Inappropriate conduct towards a member of the Evaluation Committee, a member of the SPMHA Executive, or any other member of SPMHA or Strathcona County Facilities may be reported and subject to the SPMHA Conduct Policy for potential further discipline.

4.3. Tiering Disputes

SPMHA recognizes that player performance during evaluations varies. The evaluations are structured such that it is expected that any perceived misplacements will be addressed and resolved through the completion of the process. That is, should an initial placement via Time Trials or placement matrix result in a player being excessively misplaced (i.e. poor performance in skills testing), it is expected that the player's game play ability, and the opportunity presented in the player movement diagram, will allow the player an opportunity to be promoted to the appropriate skill group. SPMHA discourages members from contacting other members to question a player's placement at any point during the evaluation process. Another member's opinion on a player's ability, or perceived placement, will not influence a player's placement. SPMHA is committed to adherence to the process outlined in this document. The only tiering dispute that will be recognized by the SPMHA Executive is that which qualifies under the Grievance Process, and therefore violates the Evaluation Guidelines.

4.4. Grievance Process

If, after reviewing the Evaluation Guidelines, you feel that the Evaluation Guidelines were not adhered to, the following is required to file a Grievance to be investigated by the Grievance Committee:

1. Grievances will only be accepted between 24 and 72 hours after either (a) the conclusion of the session in which the grievance refers; or (b) after player movement has been communicated.
2. Submit an [Evaluation Grievance Request Form](#).
3. Your submission will be reviewed within 24 hours. Once your submission is reviewed, you will be notified of whether the Grievance is accepted as being a procedural violation, and not based solely on



placement. If accepted, there will be a \$150 fee required to proceed with an investigation, and the Grievance Committee will investigate the evaluation process for your player as described in the grievance.

4. Once the investigation is complete, you will receive an email report detailing the above findings.
5. If there was an error in the evaluation process, appropriate player re-assignment may occur if warranted.
6. If there was an error, the \$150 will be refunded
7. This will close the Evaluation Review process

All decisions of the Evaluation Committee are final pending review by the Grievance Committee. A grievance resolution will consider the impact on all players, not just the player(s) included in the grievance. A grievance resolution may not change player placement but may result in a process change. Should a request to move a player be included as part of the proposed resolution, all factors including team size, Hockey Alberta Rules and Regulations compliance, and affiliation ramifications must be considered.



APPENDIX 1 - EVALUATION DRILL GUIDES, METRICS & WEIGHTINGS

U7 Drills

[CLICK HERE TO ACCESS THE CURRENT SPMHA U7 PLAYER EVALUATION DRILL GUIDE](#)

U9/U11/U13 Drills

[CLICK HERE TO ACCESS THE CURRENT SPMHA PLAYER EVALUATION DRILL GUIDE](#)

Goalie Drills

[CLICK HERE TO ACCESS THE CURRENT SPMHA GOALIE EVALUATION DRILL GUIDE](#)



Player Game Evaluation Metrics & Weights

Criteria	Description	U9 Weight	U11 Weight	U13 Weight	U15 Weight	U18 Weight
SKATING	SPEED, AGILITY & TECHNIQUE <ul style="list-style-type: none"> Demonstration of balance and agility (body position, technique) Are they in a good position for stability and strength? Forward Skating (Stride, acceleration, linear crossovers) Can they turn both directions? Backward Skating (C-cuts, crossovers, backward striding) Can they stop in both directions? Can they transition between backwards & forwards? Edge control (tight turns, inside & outside edges, pivots, crossovers) Agility (evasive skating, acceleration, change of speed/direction) 	65%	55%	50%	35%	20%
GAME UNDERSTANDING	PRINCIPLES OF OFFENCE & DEFENCE <ul style="list-style-type: none"> Player understands positional play Player supports the puck on the defensive and offensive side of the puck Player communicates with teammates Player has ability to read & react to the situation 	5%	10%	15%	20%	30%
COMPETE LEVEL	EFFORT, BATTLE & DRIVE <ul style="list-style-type: none"> Do they win or lose puck battles? Effort level on the forecheck/backcheck Do they maximize their opportunities? Do they get in shooting lanes to block shots or shy away? 	10%	15%	20%	25%	25%
TECHNICAL SKILLS	PUCK HANDLING <ul style="list-style-type: none"> In control of the puck in tight spaces and under pressure? Effectively stickhandle around opposition? Effective at protecting the puck? SHOOTING <ul style="list-style-type: none"> Effective technique? Forehand & Backhand? Perform multiple shot types? Proper shot selection? Velocity? Accuracy? PASSING <ul style="list-style-type: none"> Effective forehand & backhand pass? Can they hit moving and stationary targets? Do they take a look and select the best option? Head up looking at the target? Can they effectively receive a pass? Board passes, chips, saucer passes? 	20%	20%	15%	15%	15%
CHECKING	CONFIDENCE & TECHNIQUE <ul style="list-style-type: none"> Does the player display proper technique when giving/receiving hits? Proper angling and positioning? Does the player show contact confidence? Effectiveness of separating a player from puck. 	0%	0%	0%	5%	10%



Goalie Session & Game Evaluation Metrics & Weights

Criteria	Description	Weight
TECHNICAL SKATING/MOVEMENT	<ul style="list-style-type: none"> • Skating/Agility/ Mobility/Speed on skates • Forward/Backward/Side-to-Side Tracking • Correct Butterfly Stance - Position in Crease - Coming Out • Stance/Slides/Pushes/Balance/Recovery in drills 	20%
PHYSICAL & MENTAL SKILLS	<ul style="list-style-type: none"> • Mobility, Up/Down butterfly control and skills • Save Selection • Size & Net Coverage/Presence in Goal - Challenge shot • Battle, Focus, Aggressiveness, Fitness, Confidence 	20%
GOALIE SKILLS IN DRILLS	<ul style="list-style-type: none"> • Glove/Blocker • Post Control & Reads • Stick/Pads Control/Use • Challenge Shooters and Post-to-Post Speed 	20%
RECOVERY & ANGLES	<ul style="list-style-type: none"> • Correct Angles and Depth • Positioning for shots/deke/shooter and movement • Recovery for second shots, rebounds & passes • Control of rebounds - Puck Tracking 	20%
ADDITIONAL	<ul style="list-style-type: none"> • Movements in Warmup, Slides, Edges, Skating • Stopping the Puck 	20%

